

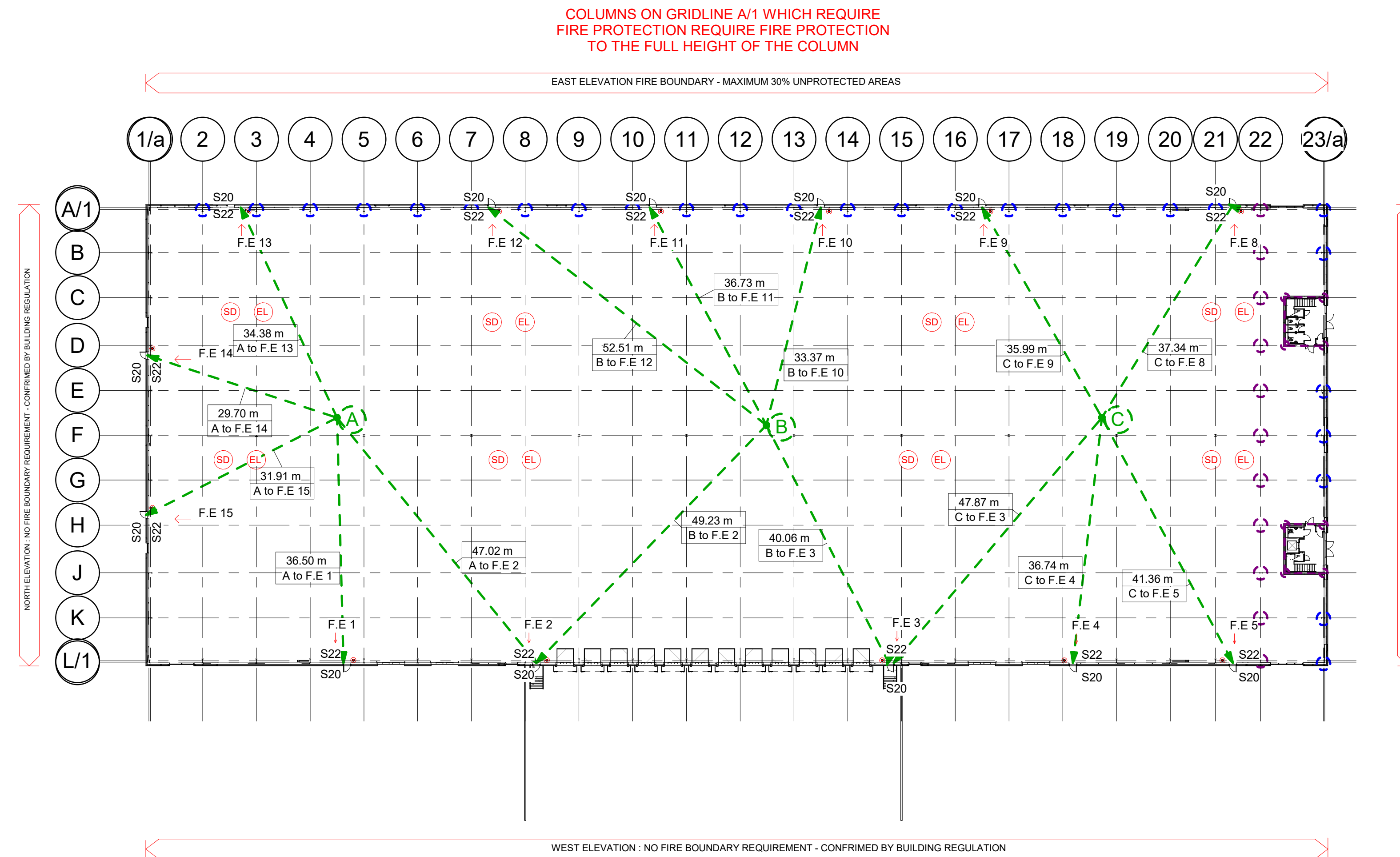
1.4 Fire Safety Strategy

1.4.1 Fire Safety Strategy

The fire strategy drawings were provided by **IMA Architects** and follow in this section.



P01	-	-	-
C01	18/01/2022	NO	Updated to construction status
C02	07/04/2022	BH	Additional notes added to suit Winvic comments
Q	20/06/2022	NO	As-Built



WAREHOUSE FIRE STRATEGY KEY:

- 30 Minute Fire Rated Wall Construction
- 60 Minute Fire Rated Compartment Wall Construction
- 120 Minute Fire Rated Compartment Wall Construction
- Steel Columns with 60 minute intumescent protection where supporting 60 minute compartment wall, floors over and fire boundary
- Steel Columns with 120 minute intumescent protection where supporting 120 minute compartment wall, floors over and fire boundary
- FD30s 30 Minute Fire Rated Door Set With Smoke Seal
- FD60s 60 Minute Fire Rated Door Set With Smoke Seal
- EL Emergency Lighting (Indicative Locations Shown)
- SD Smoke Detector
- S20 Fire Exit Keep Clear
- S22 Fire Exit
- F.E. Indicates Fire Escape Door from Warehouse
- Break Glass Units
- S13 Fire Door Keep Shut

NOTES:

- Fire Exit Signage to all doors & fire exits to be supplied & fixed by contractor to conform to BS 5499-1:2000 & 4:2002 and in accordance with the health & safety (safety signs and signals) regulations 1996.
- All emergency lighting shown is indicative and is to be sub-contractors design. All emergency lighting is to be provided in accordance with BS 5266-1:2011 and is to be designed and installed by competent person with certificate to be provided to that effect.
- New fire alarm to be installed to comply with BS 5839:2013 and is to be designed by specialist sub-contractor.
- All smoke detection shown is indicative.
- All call points are to be installed at a height of 1400mm from FFL.
- Certificates indicating compliance with the relevant British Standards will be provided by the electrical contractor for the fire alarm and escape lighting.
- All to be in accordance with Building Control requirements, recommendations & reports.
- Fire boundary conditions have been confirmed by Building Control.
- 18m rectangle used.

1 Proposed Warehouse Fire Strategy Plan
1 : 500



winvic
Clowes*
 DEVELOPMENTS

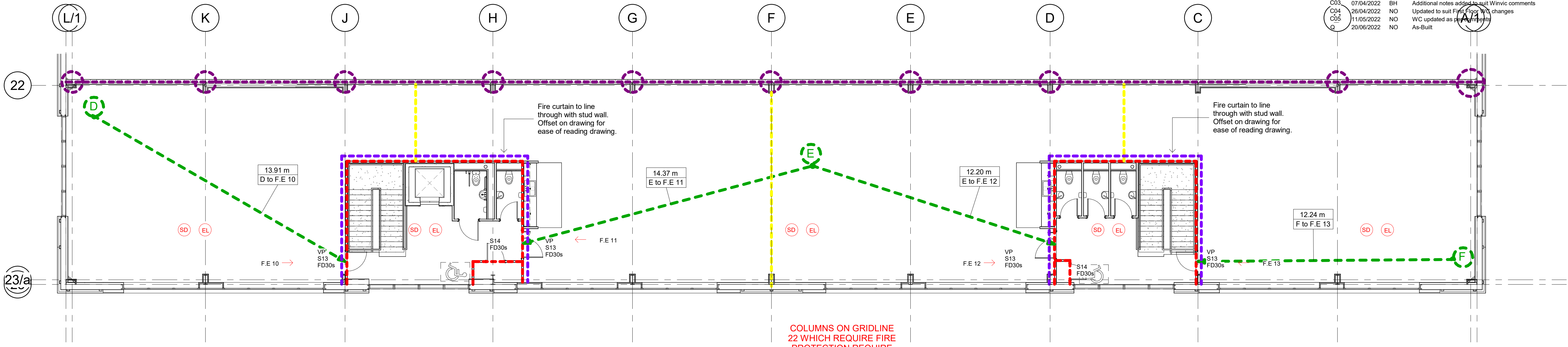
PROJECT:	Clowes Developments Proposed Employment Development Plot 8, Castlewood Grange Business Park		
STATUS:	As-Built		
DRAWING TITLE:	Proposed Warehouse Fire Strategy Plan		
DATE:	24/08/2021	DRAWN BY:	NA
SCALE:	As indicated at A1	CHECKED BY:	BH



6 Rose Way, Blaby Business Park,
Lutterworth Road, Blaby, Leicester, LE8 4BY
 0116 2781200
 www.ima-architects.co.uk

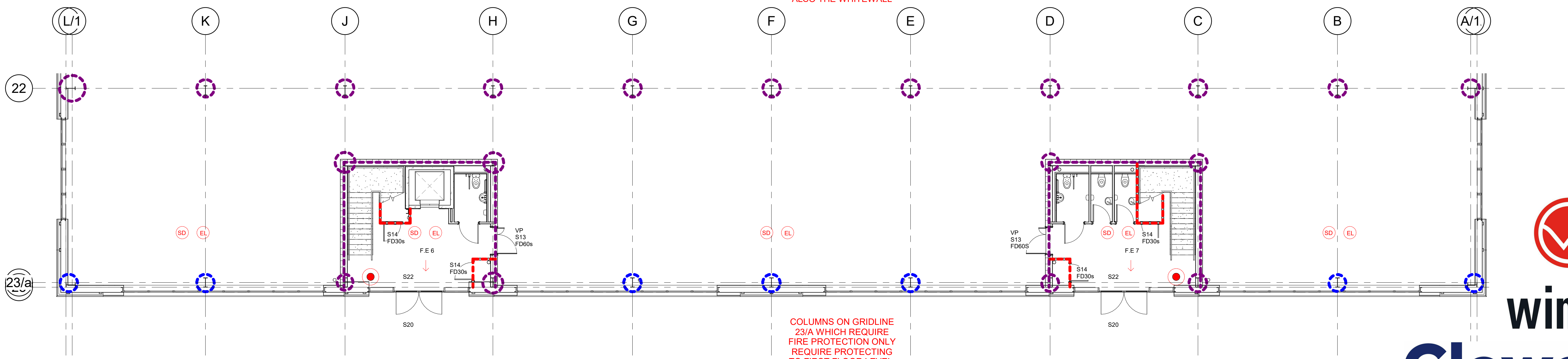
DRAWING NO:	P21033-IMA-BR-00-DR-A-221011-0105
REVISION:	Q

P01			
P02	05/01/2022	BH	Doors within whitewall changed from FD120s to FD60s
P03	12/01/2022	NO	Updated to suit sub-contractor comments
C01	18/01/2022	NO	Updated to construction status
C02	20/01/2022	NO	Updated to suit bespoke comments
C03	07/04/2022	BH	Additional notes added to suit Winvic comments
C04	26/04/2022	NO	Updated to suit Fire Alarm changes
C05	11/05/2022	NO	WC updated as per Winvic
Q	20/06/2022	NO	As-Built



1 Proposed First Floor Main Office Fire Strategy Plan
1 : 100

COLUMNS ON GRIDLINE 22 WHICH REQUIRE FIRE PROTECTION REQUIRE FULL HEIGHT PROTECTION DUE TO THEM SUPPORTING THE FIRST FLOOR CONSTRUCTION AND ALSO THE WHITEWALL



2 Proposed Ground Floor Main Office Fire Strategy Plan
1 : 100

COLUMNS ON GRIDLINE 23/A WHICH REQUIRE FIRE PROTECTION ONLY REQUIRE PROTECTING TO FIRST FLOOR LEVEL, WHERE THEY ARE SUPPORTING THE FIRST FLOOR ABOVE

WAREHOUSE FIRE STRATEGY KEY:

- 30 Minute Fire Rated Wall Construction
- 60 Minute Fire Rated Compartment Wall Construction
- 120 Minute Fire Rated Compartment Wall Construction
- Cavity Barrier within ceiling / floor void at max 20m intervals
- Fire curtain from top of stud wall up to roof level
- Steel Columns with 60 minute intumescent protection where supporting 120 minute compartment wall & floor fire boundary
- Steel Columns with 120 minute intumescent protection
- FD30s 30 Minute Fire Rated Door Set With Smoke Seal
- FD60s 60 Minute Fire Rated Door Set With Smoke Seal
- Emergency Lighting (Indicative Locations Shown)
- Smoke Detector
- S20 Fire Exit Keep Clear
- S22 Fire Exit

- Indicates Fire Escape Door from Warehouse
- Break Glass Units
- S13 Fire Door Keep Shut

NOTES:
 Fire Exit Signage to all doors & fire exits to be supplied & fixed by contractor to conform to BS 5499-1:2000 & 4:2002 and in accordance with the health & safety (safety signs and signals) regulations 1996.
 All emergency lighting shown is indicative and is to be sub-contractors design. All emergency lighting is to be provided in accordance with BS 5266-1:2011 and is to be designed and installed by competent person with certificate to be provided to that effect.
 New fire alarm to be installed to comply with BS 5839:2013 and is to be designed by specialist sub-contractor.
 All smoke detection shown is indicative.
 All call points are to be installed at a height of 1400mm from FFL.
 Certificates indicating compliance with the relevant British Standards will be provided by the electrical contractor for the fire alarm and escape lighting.
 All to be in accordance with Building Control requirements, recommendations & reports.
 Fire boundary conditions have been confirmed by Building Control.
 18m rectangle used.



PROJECT:	Clowes Developments Proposed Employment Development Plot 8, Castlewood Grange Business Park		
STATUS:	As-Built		
DRAWING TITLE:	Proposed Main Office Fire Strategy Plan		
DATE:	12/01/2022	DRAWN BY:	NA
SCALE:	1 : 100 at A1	CHECKED BY:	BH
		6 Rose Way, Blaby Business Park, Lutterworth Road, Blaby, Leicester, LE8 4BY 0116 2781200 www.ima-architects.co.uk	
DRAWING NO:	P21033-IMA-BR-ZZ-DR-A-221011-0106		
REVISION:	Q		

SECTION 1.4: FIRE STRATEGY

1.4.2 Description of Fire Detection System Employed and Fire Detection Criteria

Information provided by EBM, the Electrical Services

The fire alarm and aspirating system is manufactured by Gent Honeywell Ltd; the system will provide fire protection cover to category P1/L1 to the offices and manual call points warehouse only.

A Vigilon 4 loop fire alarm panel will be fitted within the ground floor reception area.

All cabling for the gent fire alarm system is FP200 Gold and will be run on containment / clipped direct where required.



SECTION 1.4: FIRE STRATEGY

1.4.3 Occupier's Responsibilities

The Regulatory Reform (Fire Safety) Order 2005 replaces most fire safety legislation with one simple order. It means that any person who has some level of control in premises must take reasonable steps to reduce the risk from fire and make sure people can safely escape if there is a fire.

Regulatory Reform (Fire Safety) Order 2005

What are the main rules under the order?

You must:

- carry out a fire-risk assessment identifying any possible dangers and risks
- consider who may be especially at risk
- get rid of or reduce the risk from fire as far as is reasonably possible and provide general fire precautions to deal with any possible risk left
- take other measures to make sure there is protection if flammable or explosive materials are used or stored
- create a plan to deal with any emergency and, in most cases, keep a record of your findings
- tell staff or their representatives about the risks you've identified, provide staff information, fire safety instruction and training
- review your findings when necessary

Due to the nature of the completed facility, it is strongly recommended that a competent fire risk assessor is appointed to assist with the fire risk assessment process.

The register of fire risk assessors and auditors maintained by the Institution of Fire Engineers may be a good starting point for locating one, visit <http://www.ife.org.uk/Fire-Risk-Assessors-Register> for further details.

Who is responsible for meeting the order?

In England and Wales, if you're an employer, owner, landlord or occupier of business or other non-domestic premises, you're responsible for fire safety and are known as the 'responsible person'.

Further Information

The following websites contain further detailed information and guides:

<https://www.gov.uk/workplace-fire-safety-your-responsibilities>

<https://www.gov.uk/government/publications/making-your-premises-safe-from-fire>

<http://www.legislation.gov.uk/ukxi/2005/1541/contents/made> www.communities.gov.uk/firesafety

<http://www.ife.org.uk/Fire-Risk-Assessors->